

Vision 2.3 Twin Duct PTAC Air Conditioner/Heat Pump

Optional Low Pressure Hot Water Fan Coil Model Available



www.powrmatic.co.uk

Vision2.3



HEATING
AND
COOLING
FUNCTIONS

NO
EXTERNAL
CONDENSER

NO
F-GAS
CERTIFICATE
REQUIRED

ONLY
32dB(A)
NOISE LEVEL

CE

HEATING // VENTILATION // AIR CONDITIONING

Vision 2.3 Overview

The need for air conditioning today is present winter and summer. All too often this means installing unsightly condensing units on the exterior of buildings. The new Powrmatic Vision 2.3 is a packaged solution which removes the need for an outdoor unit, and incorporates state of the art "monobloc" technology.



Almost Invisible, internally and externally

With a depth of just 17cm, the Vision 2.3 is by far the slimmest unit in this category of product. Offering a minimal design impact not only on the exterior of the building, but also internally.

Easy to install

Installation is easy due to the standard core drill bit required to make the 162mm holes. The Vision 2.3 can be installed on any external wall, either at a low or high position. All that is required for the installation (template, supporting bracket, outdoor grills, insulating wall pipes) is contained in the carton box ready to install. All that is required to be provided by the installer is the drilling machine and core bit.



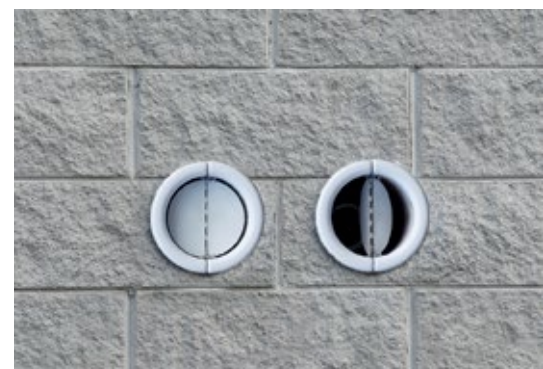
Optimised capacities

The Vision 2.3 air conditioner has been designed to optimise comfort temperatures, which reduces noise and energy consumption. Engineered with the latest in soundproofing materials, the noise level is commensurate with conventional split wall units. Utilising a new generation of DC fans, energy consumption is drastically reduced. The Vision 2.3 also operates down to a impressive -10°C with an in-built pan heater to combat ice build up.



Self opening outdoor grills

The Vision 2.3 has self opening grills that fold open when in operation and close when the unit is turned off. The grills are activated by air entering and exiting the building. With minimal external impact, the grills prevent intrusion of dust, noise and insects, and requires less after sales service.



Controls

In addition to the remote control, the in built touch screen control allows users to select each mode, including a “lock” position, to avoid improper use. The “heat function” can also be deactivated through the control, to ensure the unit operates in “cooling only” mode. When used in this mode, when the ambient temperature is over 23°C, the condensate drain is not required. The orientation and direction of the supply louvre can also be set through the built in control.



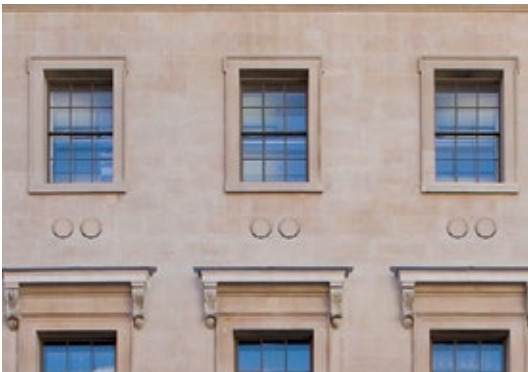
Winter time? No Frost System

The drain pan is constantly warmed up so to avoid any risk of icing of condensate drain during winter time, in heat pump mode.

No External Condenser Required

The Vision 2.3 requires no external condenser, saving you costs on installation and improving the aesthetic appearance of your building. The 162mm twin duct holes reduce the outdoor impact of air conditioning systems and seamlessly integrates into any exterior building design.

Vision 2.3

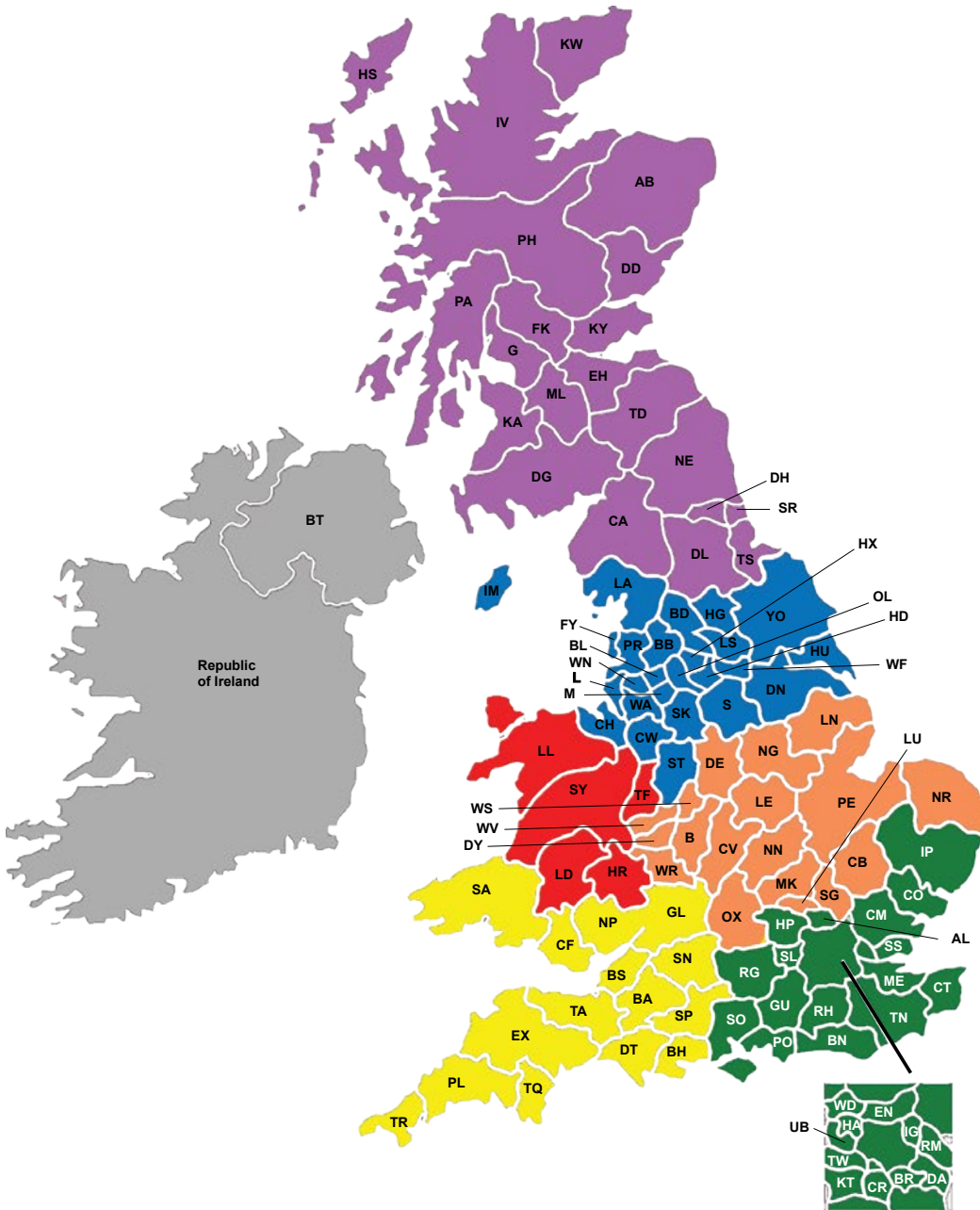


Conventional Split Unit



Unit Duties

Technical Data	U.M	VISION 2.3 10 HP
Cooling Power (1)	kW	2.30
Heating Power (2)	kW	2.25
Power Absorbed When Cooling (1)	W	850
Power Absorbed When Heating (1)	W	725
Annual Energy Consumption For Cooling	kWh	425
Dehumidification Capacity	l/h	1.1
Power Supply Voltage	V-F-Hz	230-1-50
EER	W/W	2.71
COP	W/W	3.1
Energy Efficiency Ratio When Cooling		A
Energy Efficiency Ratio When Heating		A
Internal-External Ventilation Speed	No.	3
Dimensions (W x H x D)	mm	1030 x 555 x 170
Weight	Kg	48
Noise Level (Min-Max)	dB(A)	32/41
Wall Hole Diameter / Condensate Drain	mm	162 / 15
Refrigerant Gas		R-410A
R410A Refrigerant Charge	g	460
Maximum Absorbed Power	W	920
Maximum Absorbed Current	A	4,1
Maximum Working Pressure PS	MPa	3,8
Casing Protection Level		IPX0



Dedicated Air Con Sales Managers

A/C Business Development Manager

Paul Greenough
07971 079 726
paulgreenough@powrmatic.co.uk

Northern Region

Darryl Redfearn
07531 342 154
darrylredfearn@powrmatic.co.uk

Southern Region

Thomas Gibson
07739 224 757
thomasgibson@powrmatic.co.uk

All Powrmatic Product Area Sales Managers

-  Tony Delaney
+(353) 0866 040 613
tonydelaney@powrmaticireland.com
-  John Thompson
07971 079711
johnthompson@powrmatic.co.uk
-  Alan Yates
07812 095 964
alanyates@powrmatic.co.uk
-  Dave Greaves
07766 061 514
davegreaves@powrmatic.co.uk
-  Martin Arden
07971 079 717
martinarden@powrmatic.co.uk
-  TBA (Contact Sales Office)
01460 53535
sales@powrmatic.co.uk
-  Ian Lee
07860 726 780
ianlee@powrmatic.co.uk

UK Office
Powrmatic Ltd
Hort Bridge
Ilminster
Somerset
TA19 9PS

tel: +44 (0) 1460 53535
fax: +44 (0) 1460 52341
e-mail: info@powrmatic.co.uk
web: www.powrmatic.co.uk



Ireland Office
Powrmatic Ireland
45 Broomhill Close
Tallaght
Dublin 24

tel: +353 (0) 1452 1533
fax: +353 (0) 1452 1764
e-mail: info@powrmatic.ie
web: www.powrmatic.ie

